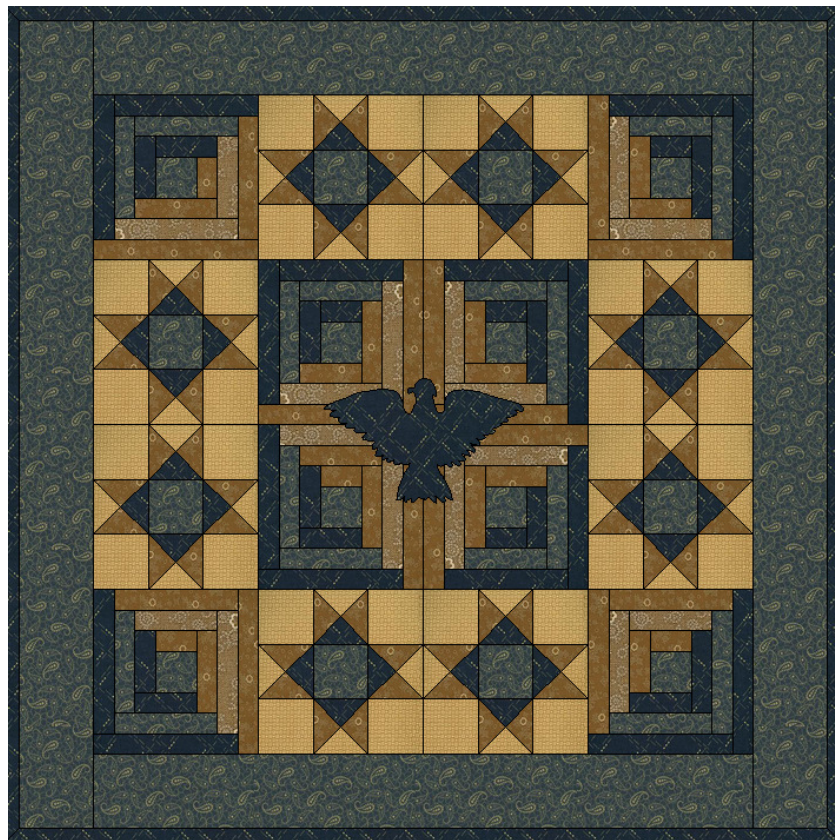


Remembering Dad

Finished size 46" X 46"



Fabric Requirements



- Dark blue - $1 \frac{1}{2}$ yard for blocks ,eagle and binding
- Medium blue - $1 \frac{3}{8}$ yard for blocks and border
- Dark tan - $1 \frac{1}{4}$ yard for star blocks and log cabin blocks
- Medium tan - $\frac{5}{8}$ for log cabin blocks
- Light tan - 1 yard for star blocks

Ohio Star Block

Finished block 9"

For each block : cut 4 light tan squares and 1 medium blue $3\frac{1}{2}'' \times 3\frac{1}{2}''$.
Cut 2 dark tan, 1 dark blue and 1 light tan $4.25'' \times 4.25''$. Cut diagonally in half 2 x.

Sew 1 light tan and 1 dark tan together.

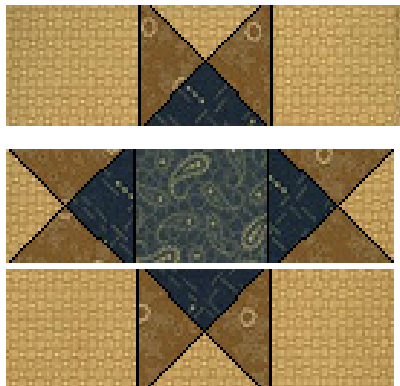
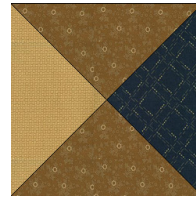
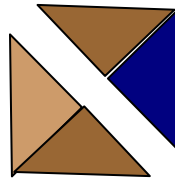
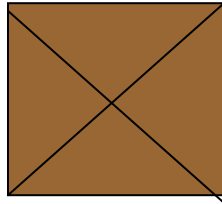
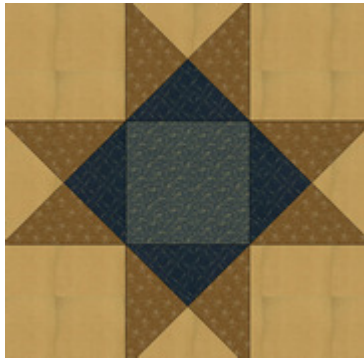
Sew 1 dark tan and 1 dark blue together.

Sew 2 sections together as shown in the picture.

Press and trim.

Sew rows together as shown.

8 Blocks are needed.



Log Cabin Block

9" finished block

Cut center square $2\frac{3}{4}" \times 2\frac{3}{4}"$.

Cut all strips $1\frac{5}{8}"$ wide.

I cut all the strips 10" long and trim as I sew.

Working counter clockwise sew strips in numerical order.

Use the diagram for color placement.

Press and trim after adding each strip.

Total of 8 log cabin blocks are needed

light tan



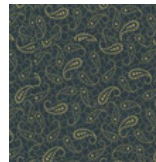
medium tan



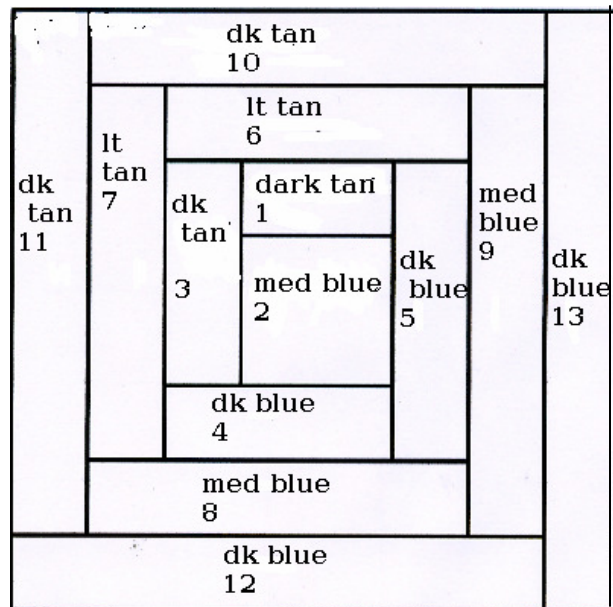
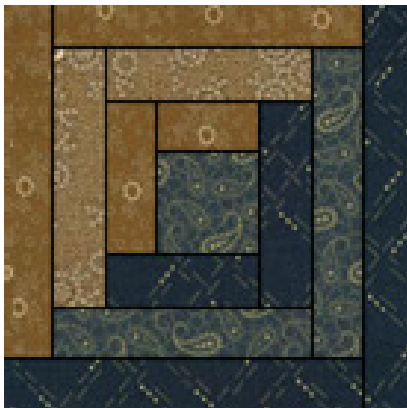
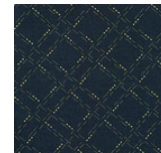
dark tan



medium blue



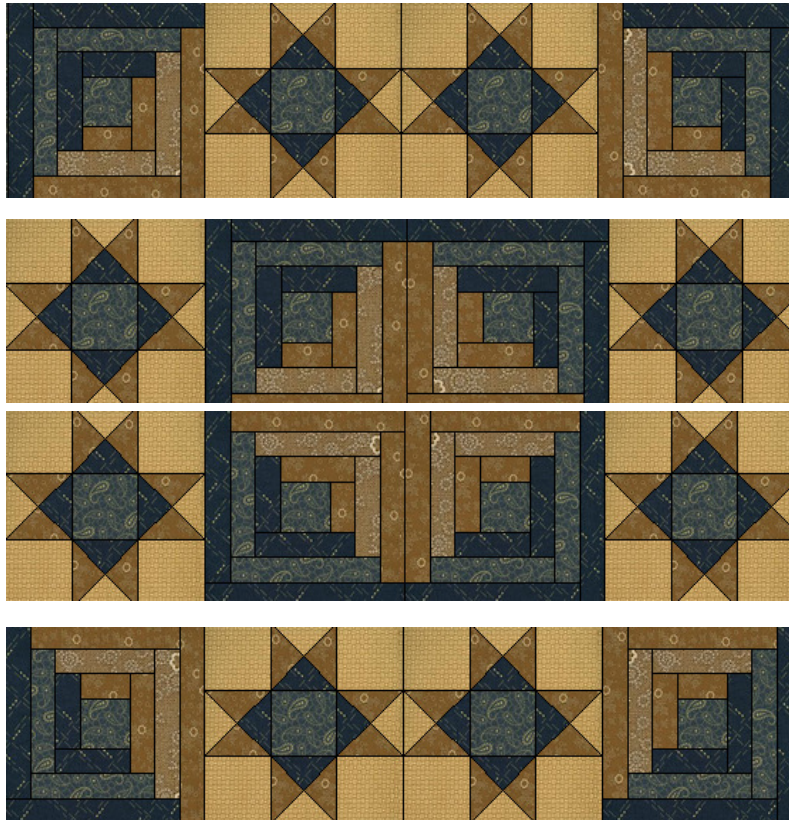
dark blue



Assembling the quilt

Sew rows together using the picture as a guide.
Press seams and square.

Add eagle appliqué using your favorite method.
Or, personalize this using an appliqué that reminds you of your dad.
An example would be a silhouette of a boat for a boater.



Border

Cut 2 strips of medium blue fabric approximately $36 \frac{1}{2}$ " x $4 \frac{1}{2}$ ". Sew 1 strip to the quilt top and 1 strip to the bottom. Press seams and trim.

For the sides you will need to piece the fabric. Each side should measure approximately $4 \frac{1}{2}$ " x $44 \frac{1}{2}$ ". Sew to your quilt top. Press and square top.

Please measure your quilt top for exact measurement

