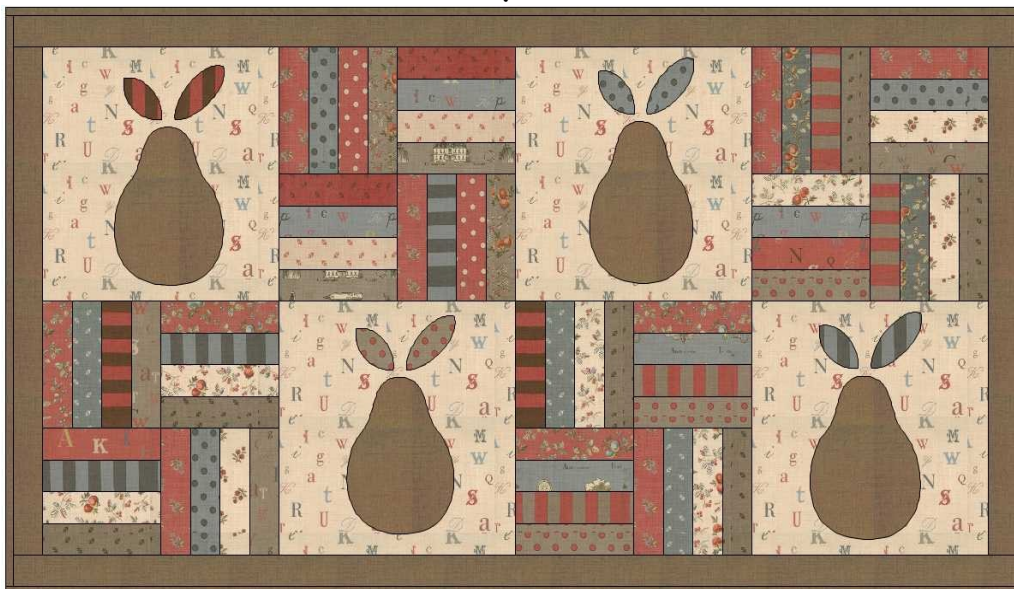


Fresh Pears

34.5" x 18.5" Table Topper

Used fabric La Petite Ecole by The French General for Moda



Fabric Requirements

1 charm pack (will have extra)

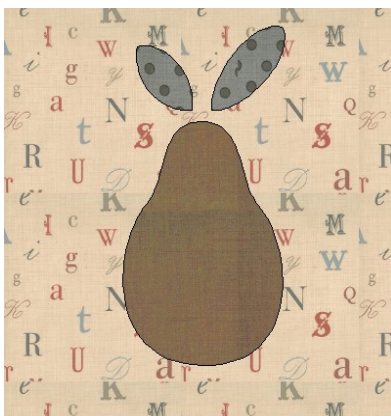
or

64- 1-1/2" x 4-1/2" strips from scraps

1/2 yard brown for pears, border and binding

1/3 yard light for applique blocks

Applique Block



Cut 4 light background squares 8-1/2".

Use brown for the pears and scraps for the leaves.

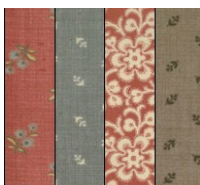
Trace pattern pieces onto fusible web and follow manufacturers directions for fusing. Cut 4 of each template

Using the picture as a guide for pattern placement iron pattern pieces to the block. Applique by machine using a small zig-zag

or blanket stitch.

Rail Fence Block

Finished block size is 8"



Cut 64 strips from the charms or scraps 1-1/2" x 4-1/2"

Sew 4 various color strips together.

Make 16 of these blocks.



Next sew 2 blocks together making sure to rotate
1 block.



Finally sew 2 sets together making sure to reverse
the direction of the bottom row.

For the borders cut 2 strips of brown
1-1/2" x 16-1/2" for the sides and
1-1/2" x 34-1/2" for the top and bottom.

These measurements are approximate. Measure your
top for accuracy.

Binding

Cut strips 1-1/2" wide. You'll need approximately
120".

Enjoy!

Linda

