

Flowers for Britt

Finished size 19.5 x 31.5



Fabric Requirements

FQ Beige tonal for center

3/4 yard Burgandy tonal for penny background, star, heart, flowers, inner border and binding

1/4 yard Green 1 for circles and leaves

1/8 yard Green 2 for stems

1/8 yard Light brown print 1 for tongues

1/2 yard Light brown print 2 for border

1/8 yard Orange print for flowers

Center Applique Block

Cut beige tonal 13.5 x 15.5

Trace and cut out appliqué templates

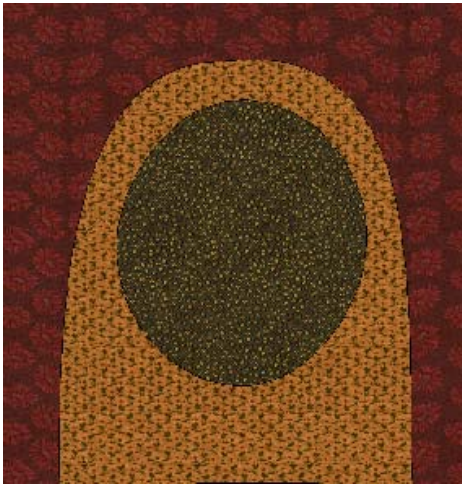
Refer to the picture for template placement

Applique using your favorite method.

I used fusible web

Remember to add seam allowance when using the needleturn method.





Adding the tongues

Cut burgundy fabric 5.5 x 5.5

Trace the tongue template.

You'll need to make 6 tongues and 6 circles.

Applique 1 tongue to each square .

Add a circle to each tongue.

Sew 3 squares together and sew to the top of the appliqué square.

Repeat for the bottom.

1st border

Cut 4 strips that measure 1 ¼" x the length (cut 2) and width (cut 2) of your quilt top.

Sew to the top, bottom and sides .

2nd Border

Cut 4 strips that measure 4 ½" x the length (cut 2) and width (cut 2) of your quilt top.

Sew to the top, bottom and sides .

Binding

Cut burgundy fabric 1 ½" wide for binding

*** Wool Pennyrug***

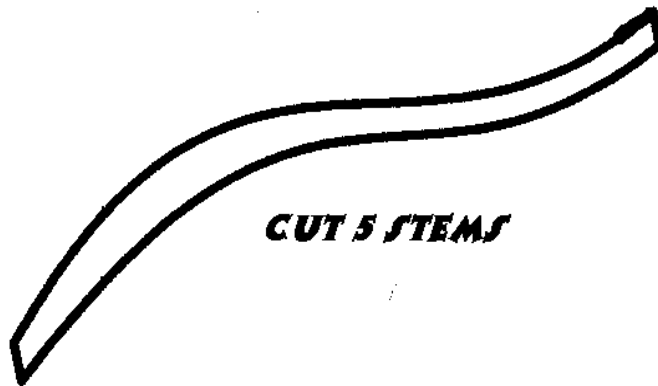
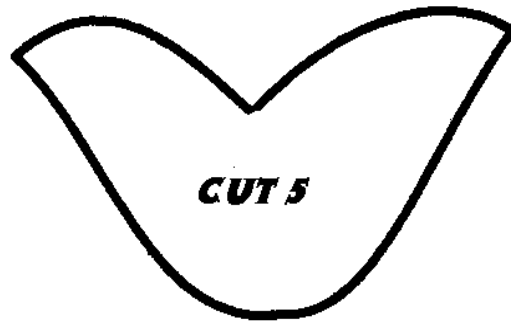
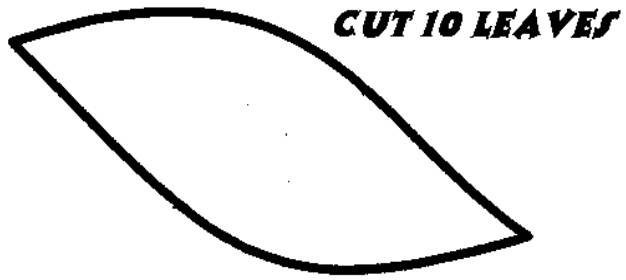
This can easily be made in wool.

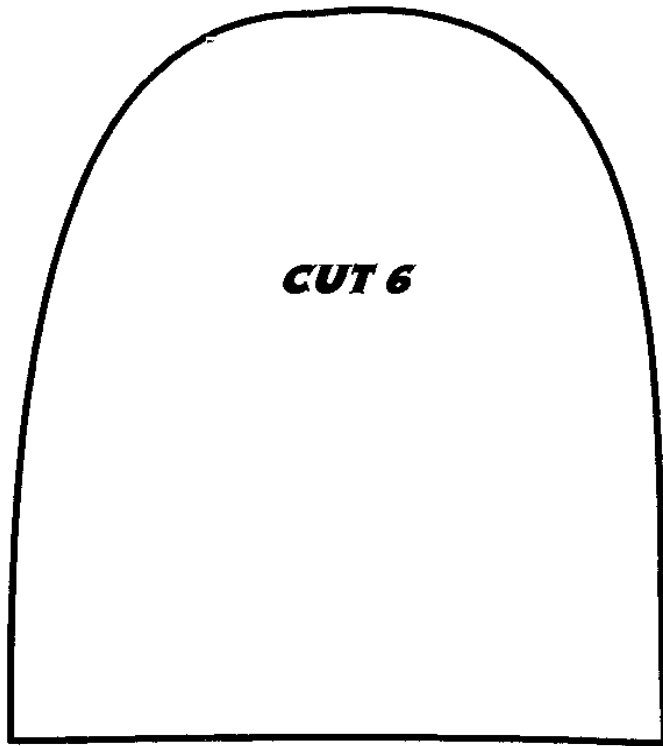
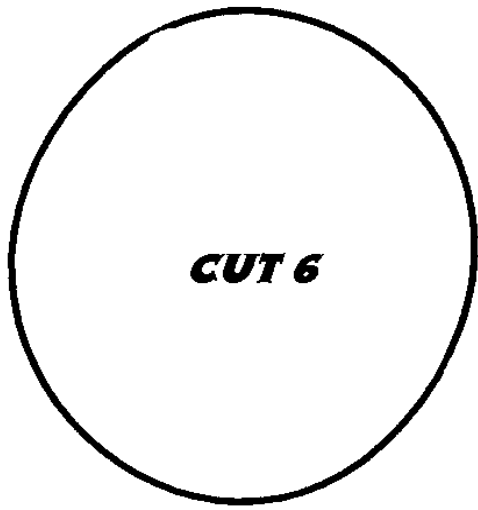
For a pennyrug, eliminate the borders and the burgundy background used in the tongues.

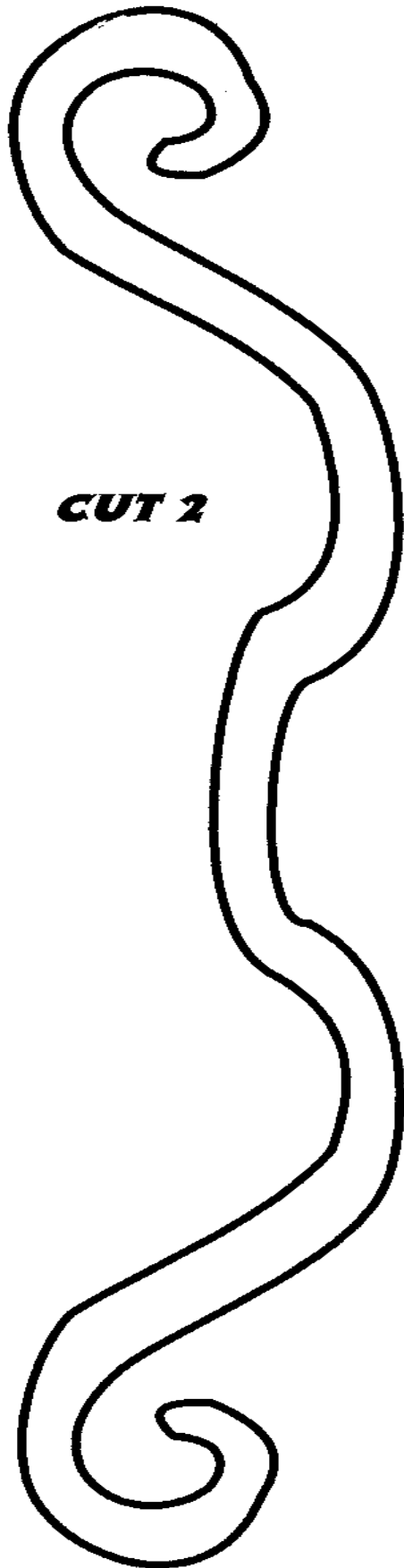
You can also make this in a combination of fabric and wool.

Use wool for all the appliqué.

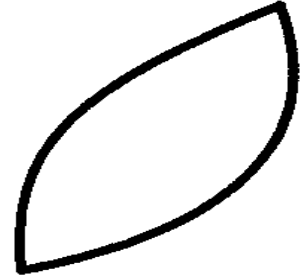
Have fun!!







CUT 2



CUT 6

