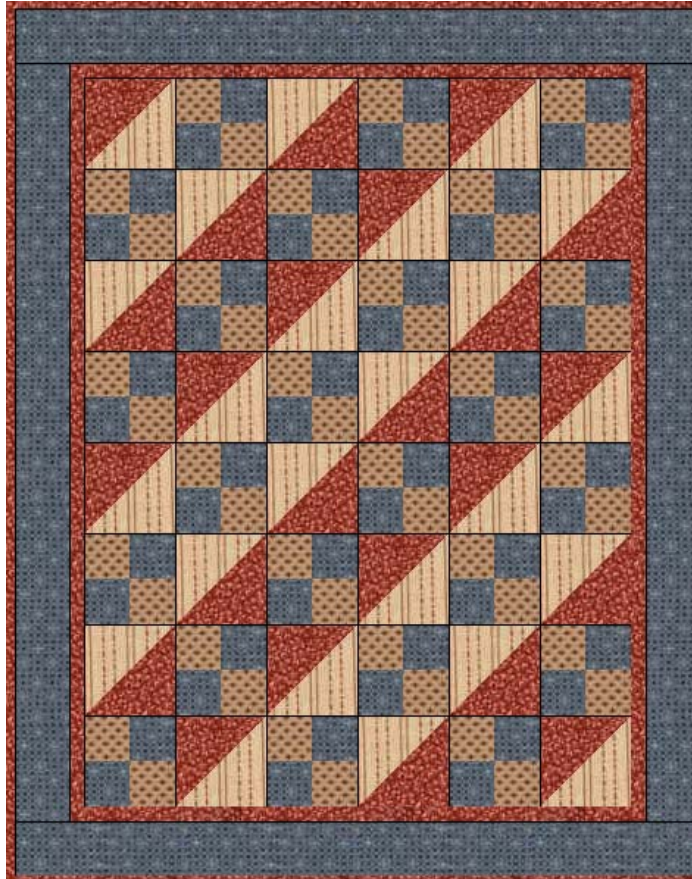


www.this-n-thatfabrics.com

Come Climb With Me

Finished size 45 ½" x 58 ½"



Fabrics used are from a new collection from Honey and Me called Keepers

Fabric requirements

1 ½ yards of blue print for blocks and border

1 yard of red print for blocks

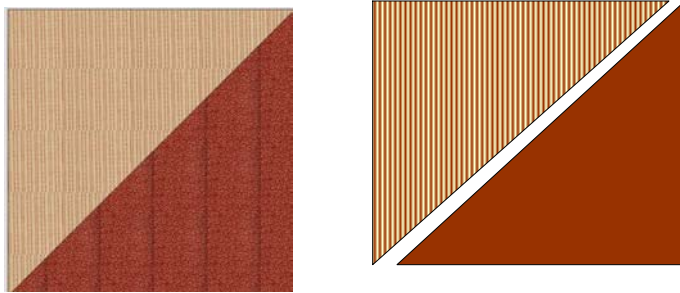
¾ yard of red stripe or shirting for blocks

½ yard tan and blue print for blocks

½ yard for binding

Half Square Triangle block

**Finished size 6" (unfinished 6 1/2")
Cut 12 squares of each color 6 7/8" x 6 7/8"
Cut each diagonally in half
Sew pairs together to make 24 squares**



Four Patch block

**Finished size 6" (unfinished 6 1/2")
24 blocks needed
Cut 3 strips 3 1/2" wide x wof (width of fabric)
Sew 1 blue strip and 1 tan together
Cut in 3 1/2" segments
Sew 2 segments together to make the 4-patch block.**



Row 1- sew 6 blocks together starting with half square triangle
Row 2 – sew 6 blocks together starting with 4- patch block
Repeat for the next 6 rows.

Inner Border

The borders will need to be pieced.
Cut the inner border 1 ½” x wof.
Sides should measure approximately 50 ½”
Top and bottom should be 38 ½”
Measure your quilt and adjust measurements accordingly.

Outer Border

For the outer border cut fabric 4” x wof.
Side measurements are approximately 50 ½” long
Top and bottom approximately 46”
Measure your quilt for accurate lengths

Cut Binding strips 1 ½” for single fold

Enjoy!!!

